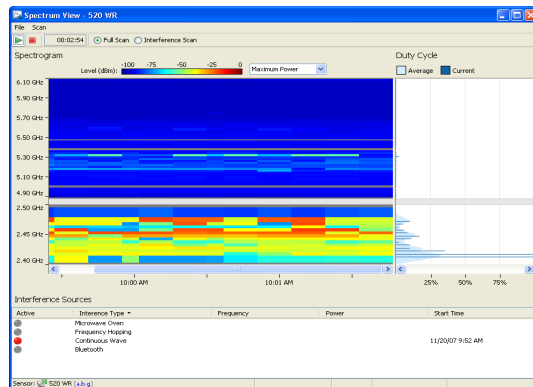


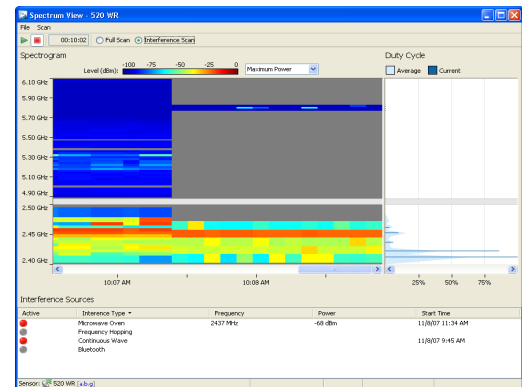


MOTOROLA AIRDEFENSE Spectrum Analysis

Identify and Classify WLAN Interference Sources



Spectrum Analysis Full Scan



Classify Interference Sources

BENEFITS

Troubleshoot The Physical Layer Of Your WLAN In Real Time At Remote Locations

Maintain WLAN Performance By Proactively Identifying Sources Of Interference

Perform Spectrum Analysis Without Dedicated Hardware, Utilizing Your Existing Wireless Intrusion Prevention System Infrastructure

The Motorola AirDefense Spectrum Analysis module provides the industry's first software only solution to view the physical layer of your wireless network using existing Wireless Intrusion Prevention System hardware. With Spectrum Analysis network administrators can identify and classify possible sources of interference, such as microwave, Bluetooth, cordless phones and view the impact to the network. Utilizing the same Motorola AirDefense Enterprise distributed monitoring sensors for both Intrusion Detection and Spectrum Analysis allows the administrator to troubleshoot the interference problems without having to send a technician with expensive, dedicated Spectrum Analysis hardware to a remote location.

Wireless Local Area Networks operate in the same 2.4 GHz and 5 GHz unlicensed spectrum as numerous other devices, such as cordless phones, Bluetooth headsets, wireless cameras and microwave ovens. These devices may cause minor to severe interference in the Wireless LAN and have an impact to network performance. Often sources are introduced unknowingly. Because the interference may be intermittent troubleshooting is particularly cumbersome and typically must be performed in real time. The Motorola AirDefense Spectrum Analysis module offers a solution to these problems and does not require additional hardware or new sensors. Using a software-only upgrade of the existing Wireless Intrusion Prevention System it is possible to obtain a real time view of the physical layer of the network. Spectrum Analysis can also

run in the background and alert the administrator when an interference source is detected so that performance issues can be proactively solved before critical wireless applications are affected.

Spectrum Analysis feature includes detection of:

- Bluetooth devices
- Microwave ovens
- Frequency Hopping interference such as cordless phones
- Continuous Wave interference such as wireless cameras

For more information on Motorola AirDefense Solutions, visit us at www.motorola.com/airdefensesolutions.

SPECIFICATION SHEET

MOTOROLA AIRDEFENSE

SPECTRUM ANALYSIS

Identify and Classify WLAN Interference Sources



MOTOROLA

motorola.com

Part number AD-SASN. Printed in USA 02/10. MOTOROLA and the Stylized M Logo are registered in the US Patent & Trademark Office. All other product or service names are the property of their respective owners. ©Motorola, Inc. 2010. All rights reserved.